

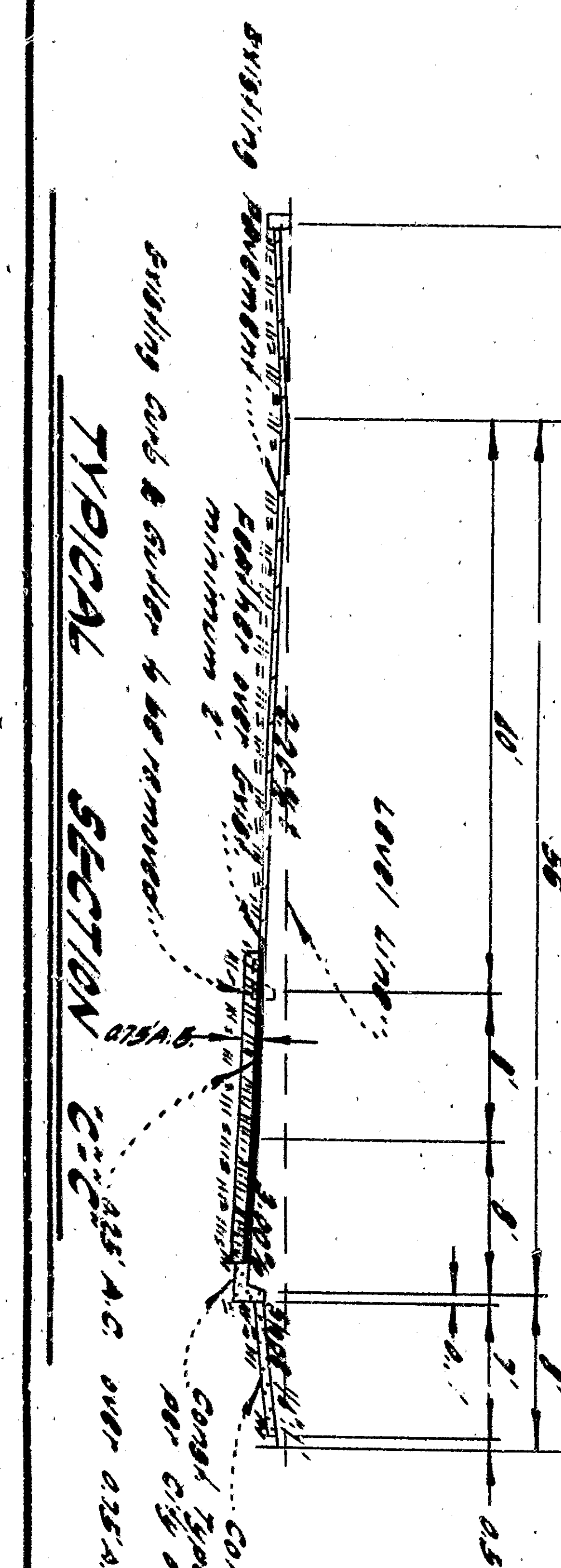
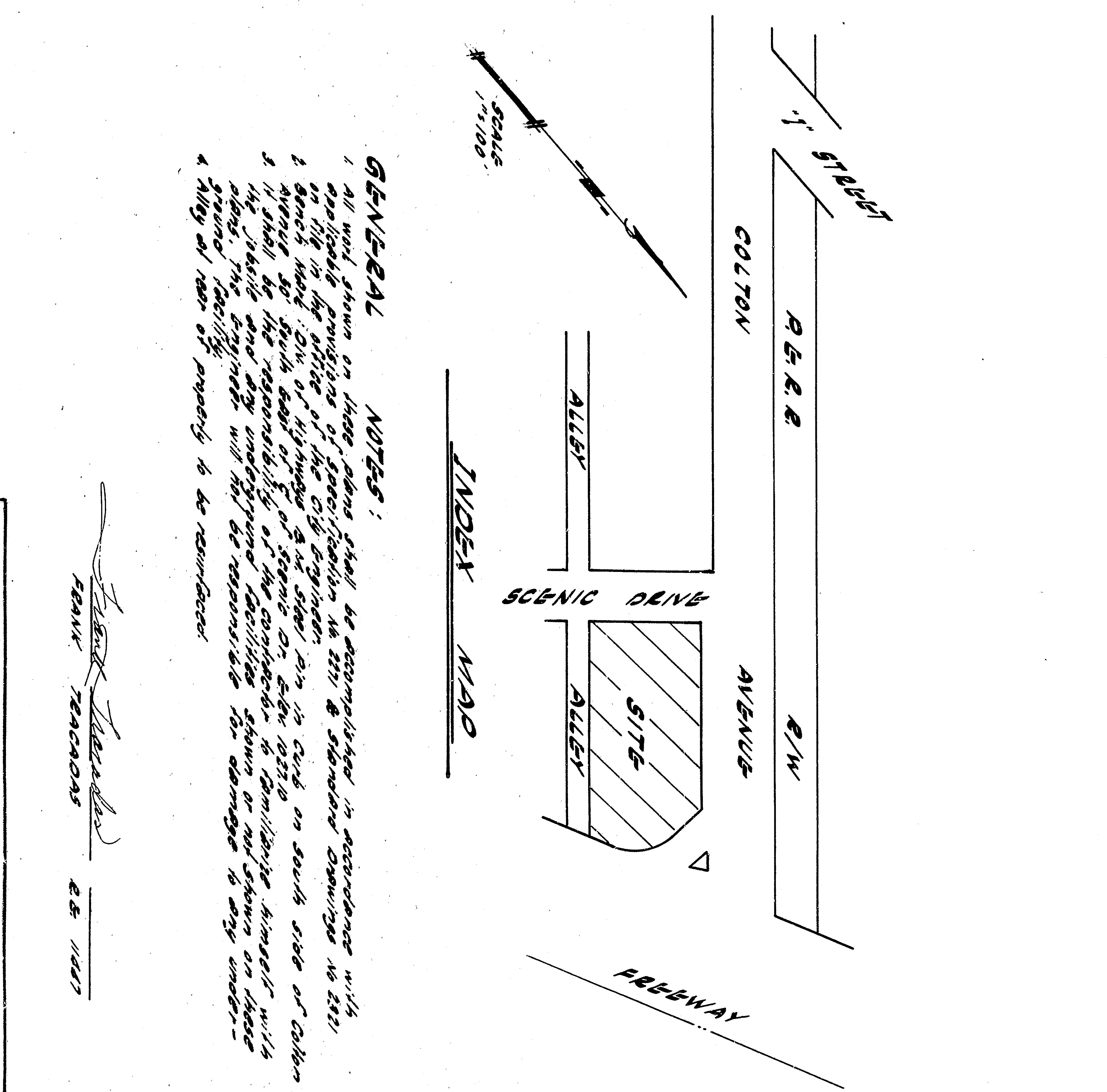
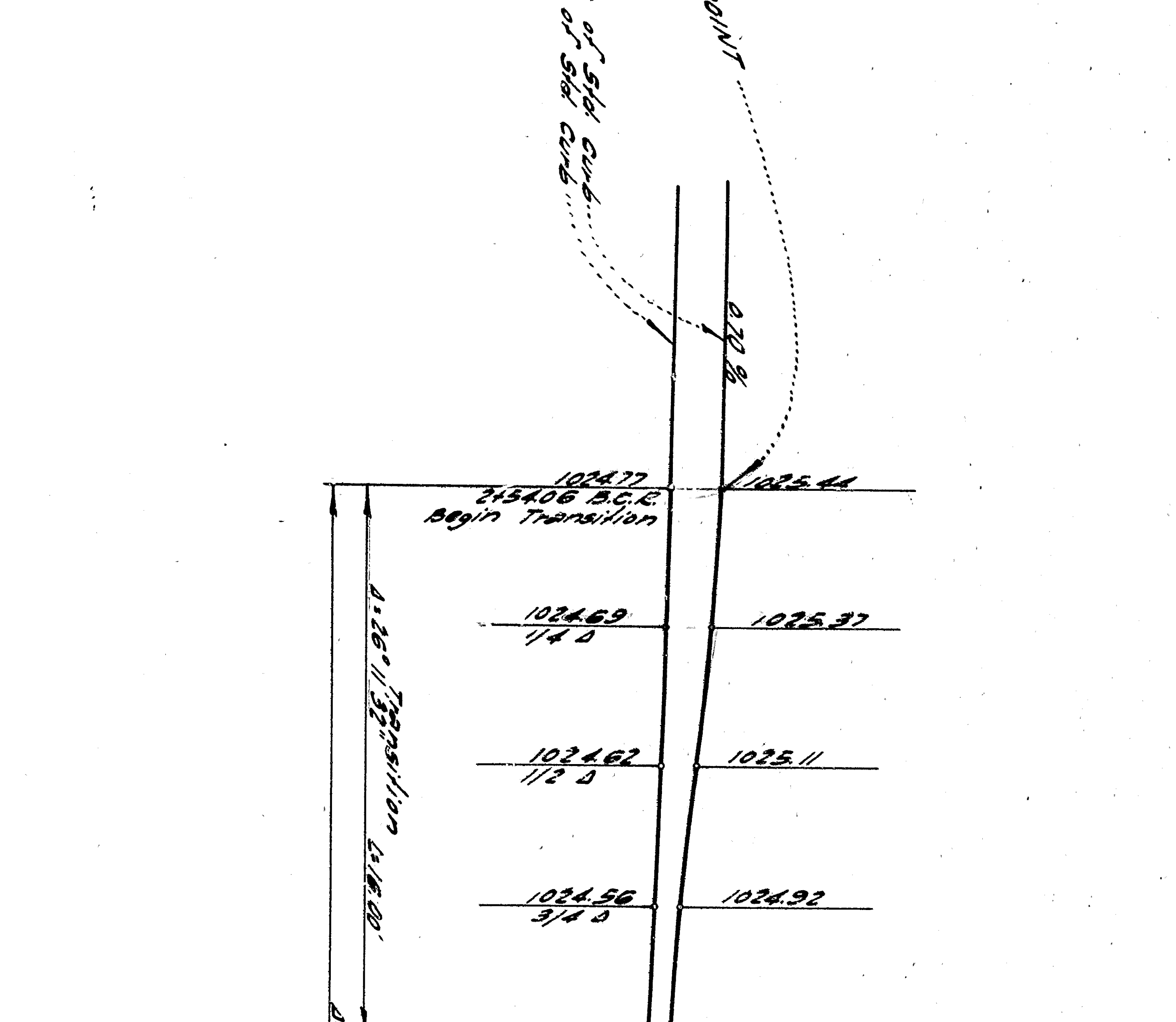
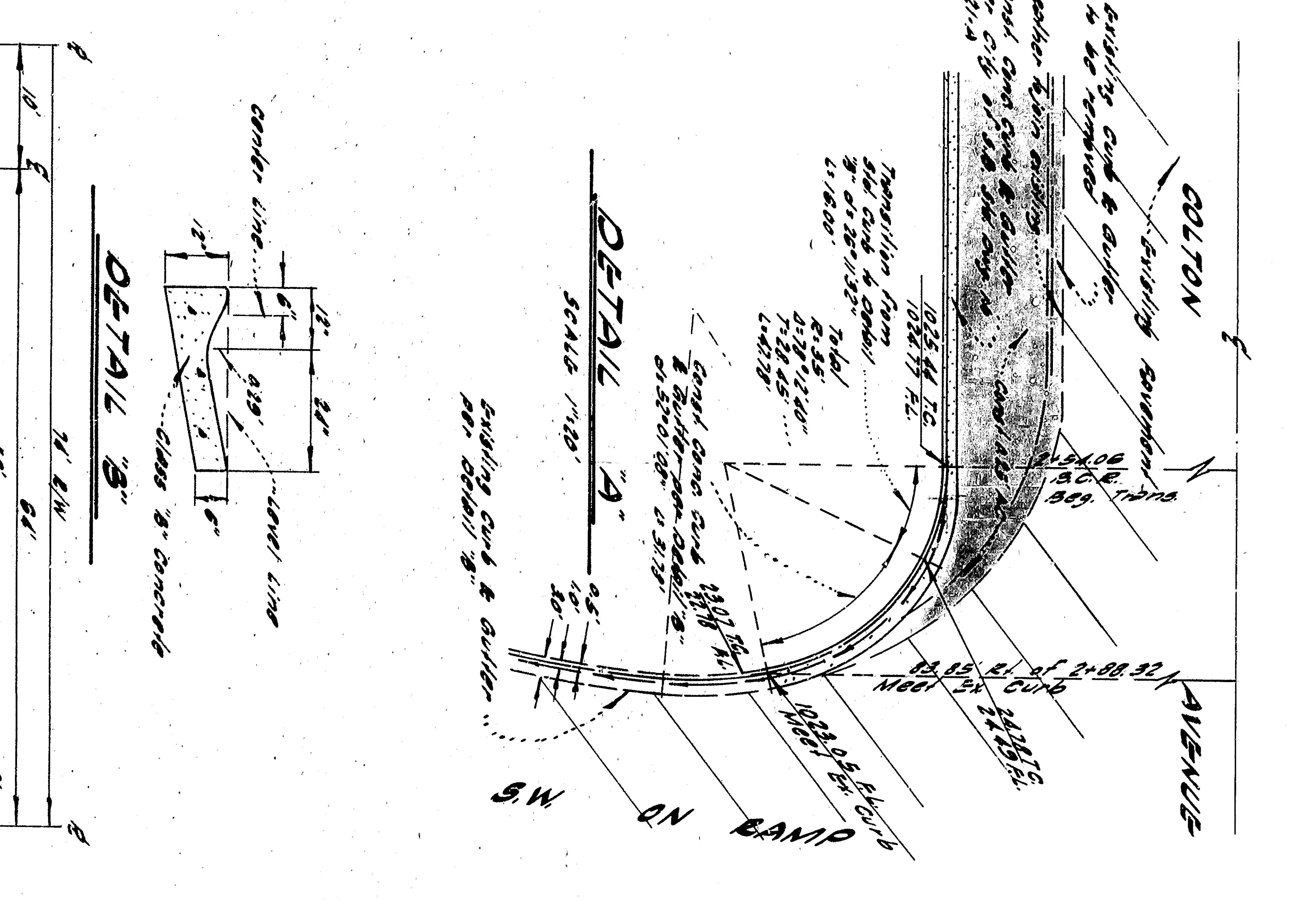
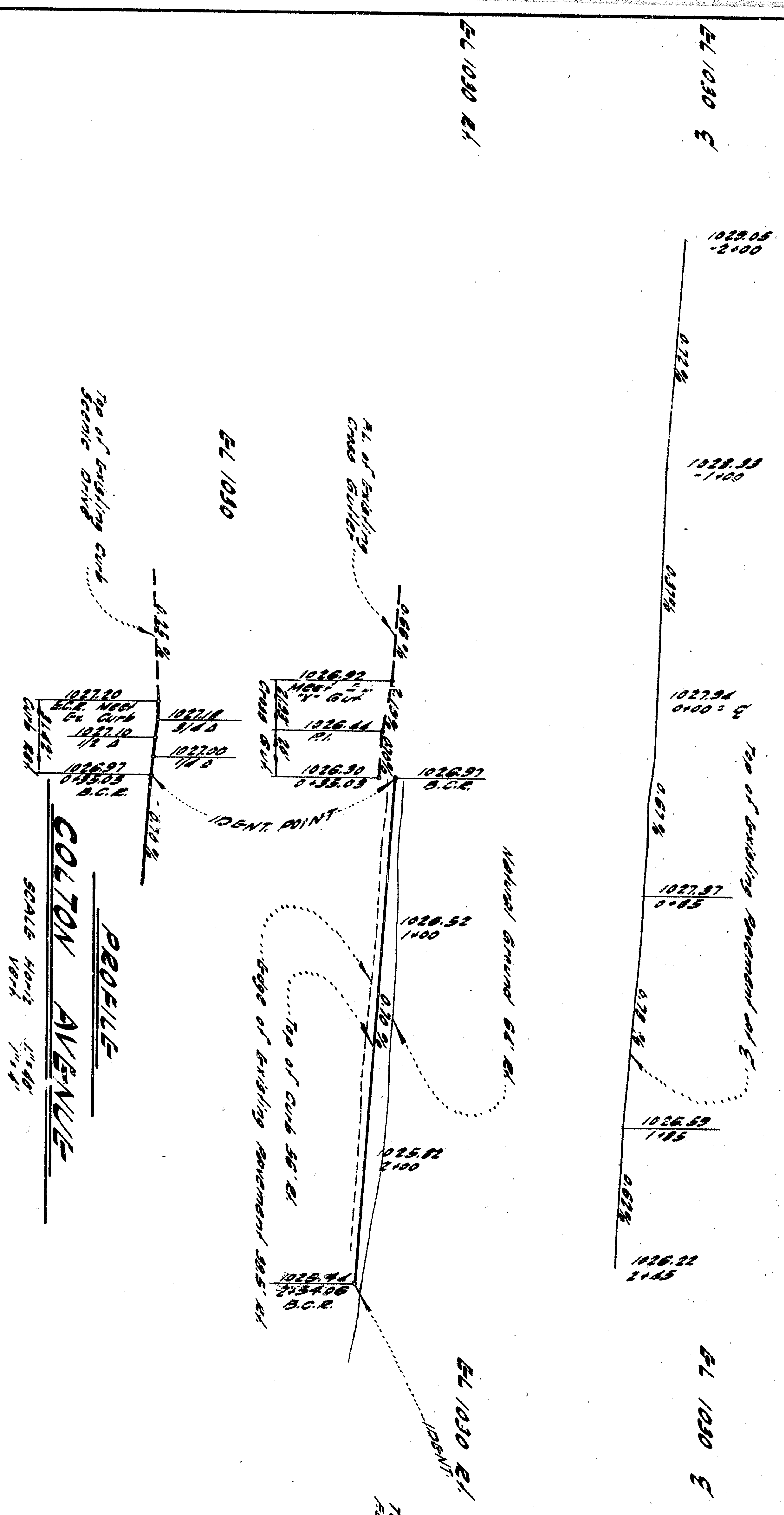
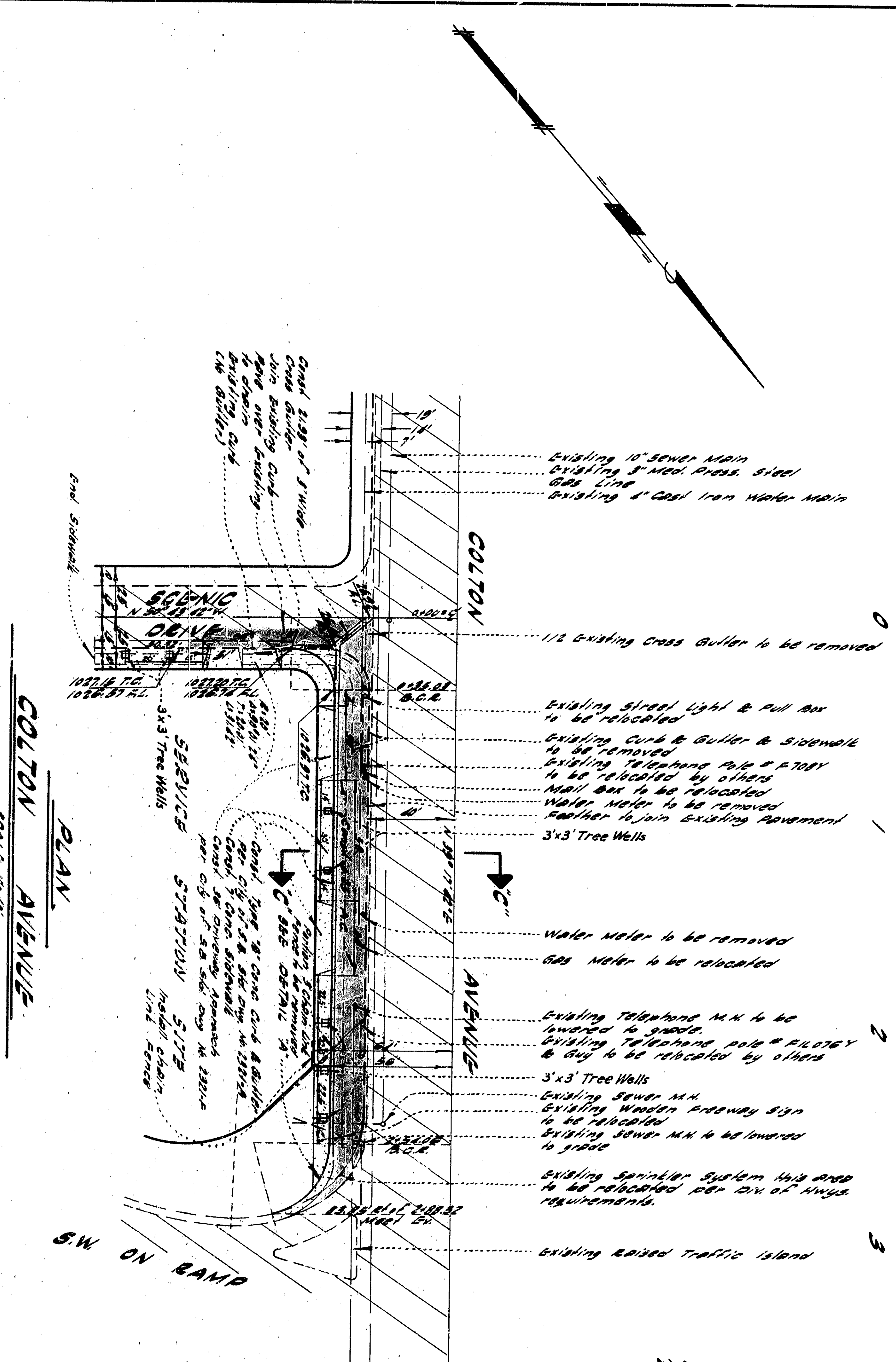
GENERAL NOTES:

- All work shown on these plans shall be accomplished in accordance with the specifications of the City of San Bernardino, California, and the Standard Specifications for Highway Construction, 1967 Edition, as amended.
- Wherever the word "CONCRETE" is used, it shall mean concrete of the type specified in the specifications.
- Wherever the word "ASPHALT" is used, it shall mean asphalt of the type specified in the specifications.
- Wherever the word "GRAVEL" is used, it shall mean gravel of the type specified in the specifications.
- Wherever the word "SAND" is used, it shall mean sand of the type specified in the specifications.
- Wherever the word "CEMENT" is used, it shall mean cement of the type specified in the specifications.
- Wherever the word "WATER" is used, it shall mean water of the type specified in the specifications.
- Wherever the word "GAS" is used, it shall mean gas of the type specified in the specifications.
- Wherever the word "SEWER" is used, it shall mean sewer of the type specified in the specifications.
- Wherever the word "SOLID" is used, it shall mean solid of the type specified in the specifications.
- Wherever the word "LIQUID" is used, it shall mean liquid of the type specified in the specifications.
- Wherever the word "GASOLINE" is used, it shall mean gasoline of the type specified in the specifications.
- Wherever the word "OIL" is used, it shall mean oil of the type specified in the specifications.
- Wherever the word "FUEL" is used, it shall mean fuel of the type specified in the specifications.
- Wherever the word "ENERGY" is used, it shall mean energy of the type specified in the specifications.
- Wherever the word "POWER" is used, it shall mean power of the type specified in the specifications.
- Wherever the word "HEAT" is used, it shall mean heat of the type specified in the specifications.
- Wherever the word "COLD" is used, it shall mean cold of the type specified in the specifications.
- Wherever the word "WARM" is used, it shall mean warm of the type specified in the specifications.
- Wherever the word "HOT" is used, it shall mean hot of the type specified in the specifications.
- Wherever the word "COOL" is used, it shall mean cool of the type specified in the specifications.
- Wherever the word "WET" is used, it shall mean wet of the type specified in the specifications.
- Wherever the word "DRY" is used, it shall mean dry of the type specified in the specifications.
- Wherever the word "MOIST" is used, it shall mean moist of the type specified in the specifications.
- Wherever the word "DAMP" is used, it shall mean damp of the type specified in the specifications.
- Wherever the word "SATURATED" is used, it shall mean saturated of the type specified in the specifications.
- Wherever the word "UNSATURATED" is used, it shall mean unsaturated of the type specified in the specifications.
- Wherever the word "OVERSATURATED" is used, it shall mean oversaturated of the type specified in the specifications.
- Wherever the word "UNDERSATURATED" is used, it shall mean undersaturated of the type specified in the specifications.
- Wherever the word "EQUILIBRIATED" is used, it shall mean equilibrated of the type specified in the specifications.
- Wherever the word "NONEQUILIBRIATED" is used, it shall mean nonequilibrated of the type specified in the specifications.
- Wherever the word "STABLE" is used, it shall mean stable of the type specified in the specifications.
- Wherever the word "UNSTABLE" is used, it shall mean unstable of the type specified in the specifications.
- Wherever the word "COMPACTED" is used, it shall mean compacted of the type specified in the specifications.
- Wherever the word "NONCOMPACTED" is used, it shall mean noncompact of the type specified in the specifications.
- Wherever the word "COMPACTED" is used, it shall mean compacted of the type specified in the specifications.
- Wherever the word "NONCOMPACTED" is used, it shall mean noncompact of the type specified in the specifications.
- Wherever the word "COMPACTED" is used, it shall mean compacted of the type specified in the specifications.
- Wherever the word "NONCOMPACTED" is used, it shall mean noncompact of the type specified in the specifications.

DEPARTMENT OF ENGINEERING
CITY OF SAN BERNARDINO
 IMPROVEMENT PLANS—COLTON AVENUE WIDENING
 GARNIER TEE TRACEDAS & TROY
 CIVIL ENGINEERING—LAND SURVEYING
 351 WEST SECOND ST.
 SAN BERNARDINO, CALIF.

APPROVED BY: [Signature]
 CITY ENGINEER, NO. 1853

REFERENCE: DRAWING NO. 3-377
 SHEET 1 OF 1 SHEET



GENERAL NOTES:

- All work shown on these plans shall be accomplished in accordance with the specifications of the City of San Bernardino.
- Existing utility lines shown on these plans are for information only. It is the responsibility of the contractor to verify the location and depth of all utility lines before construction.
- The contractor shall be responsible for obtaining all necessary permits and approvals from the appropriate authorities.
- The contractor shall be responsible for maintaining traffic control and safety during construction.
- The contractor shall be responsible for restoring the site to its original condition or better after construction is complete.

DEPARTMENT OF ENGINEERING
CITY OF SAN BERNARDINO
 IMPROVEMENT PLANS—COLTON AVENUE WIDENING
 GARNIER TEE TRACEDAS & TROY
 CIVIL ENGINEERING—LAND SURVEYING
 351 WEST SECOND ST.
 SAN BERNARDINO, CALIF.

APPROVED BY: [Signature]
 CITY ENGINEER, NO. 1853

DRAWN BY: [Signature]
 CHECKED BY: [Signature]
 SHEET 1 OF 1